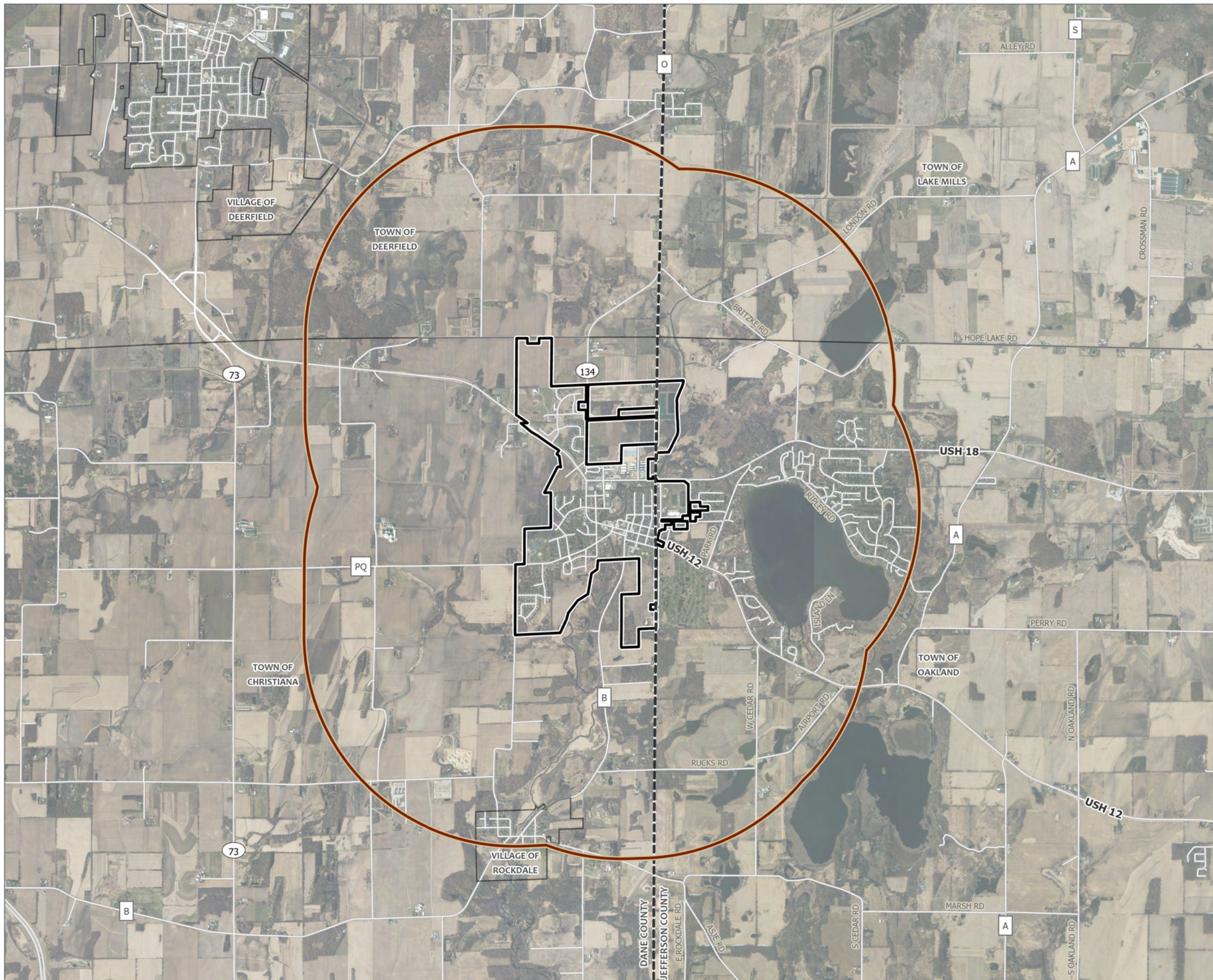


APPENDIX D I MAPS

Planning Area

Comprehensive Plan Update

Village of Cambridge
Dane & Jefferson Counties, WI



- Planning Area (1.5 Mile Buffer)
- Village of Cambridge
- Surrounding Municipality
- County Boundary






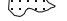
Data Sources:
Dane County GIS (2023)
Jefferson County GIS (2023)
Aerial: WDNR Aerial (2018-2020)



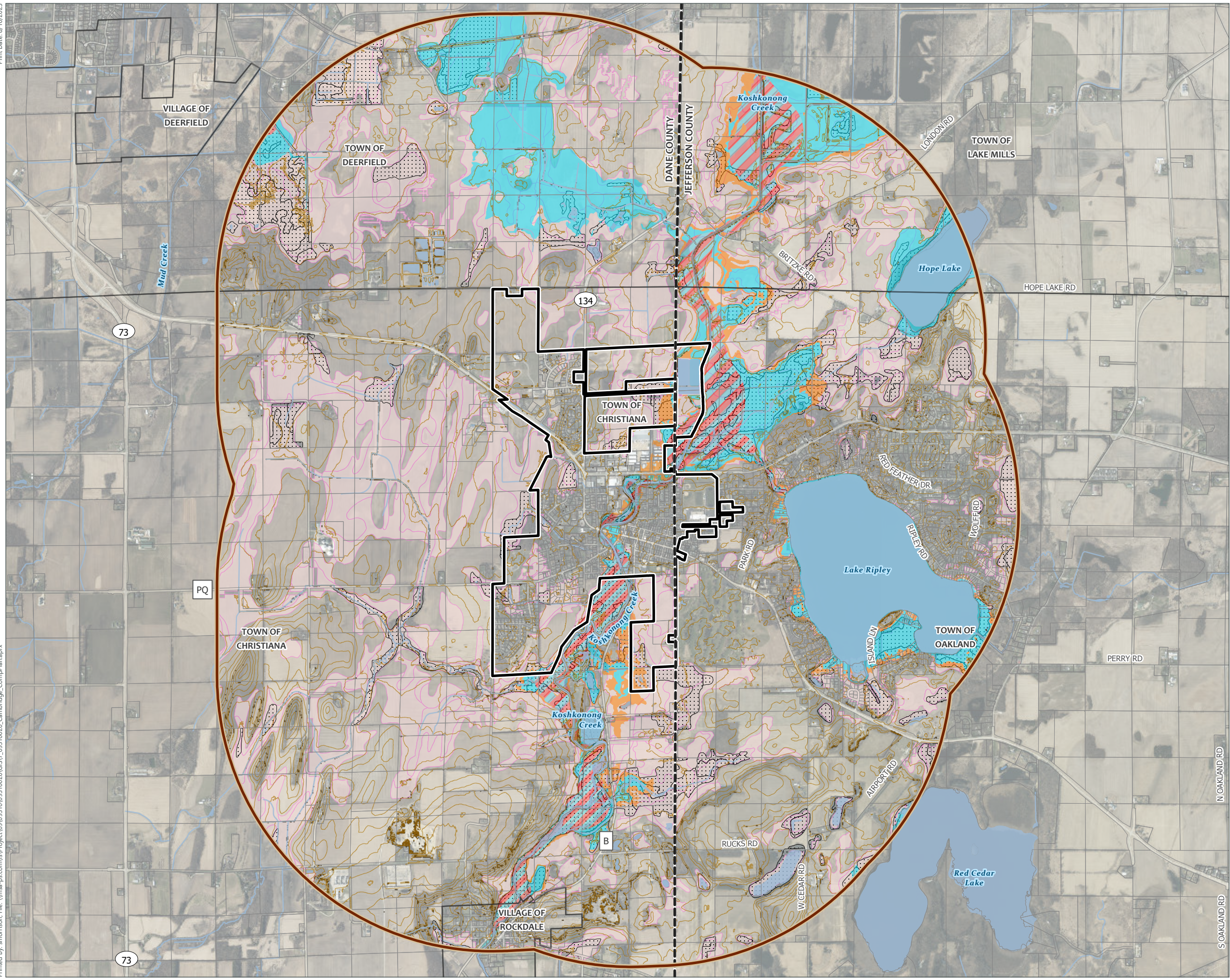
Development Limitations

Comprehensive Plan Update

Village of Cambridge
Dane & Jefferson Counties, WI

-  Surrounding Municipality
-  2-ft Contour
-  10-ft Contour
-  Slopes Greater than 20%
-  Max Extent Wetland Indicators (NRCS)
-  Wetland Class Areas (WDNR)

Print Date: 8/10/2023
Printed By: smorrison, File: \\msa-ps.com\fs\Project\09\093100\09310020\GIS\7_09310020_Cambridge_CompPlan.aprx

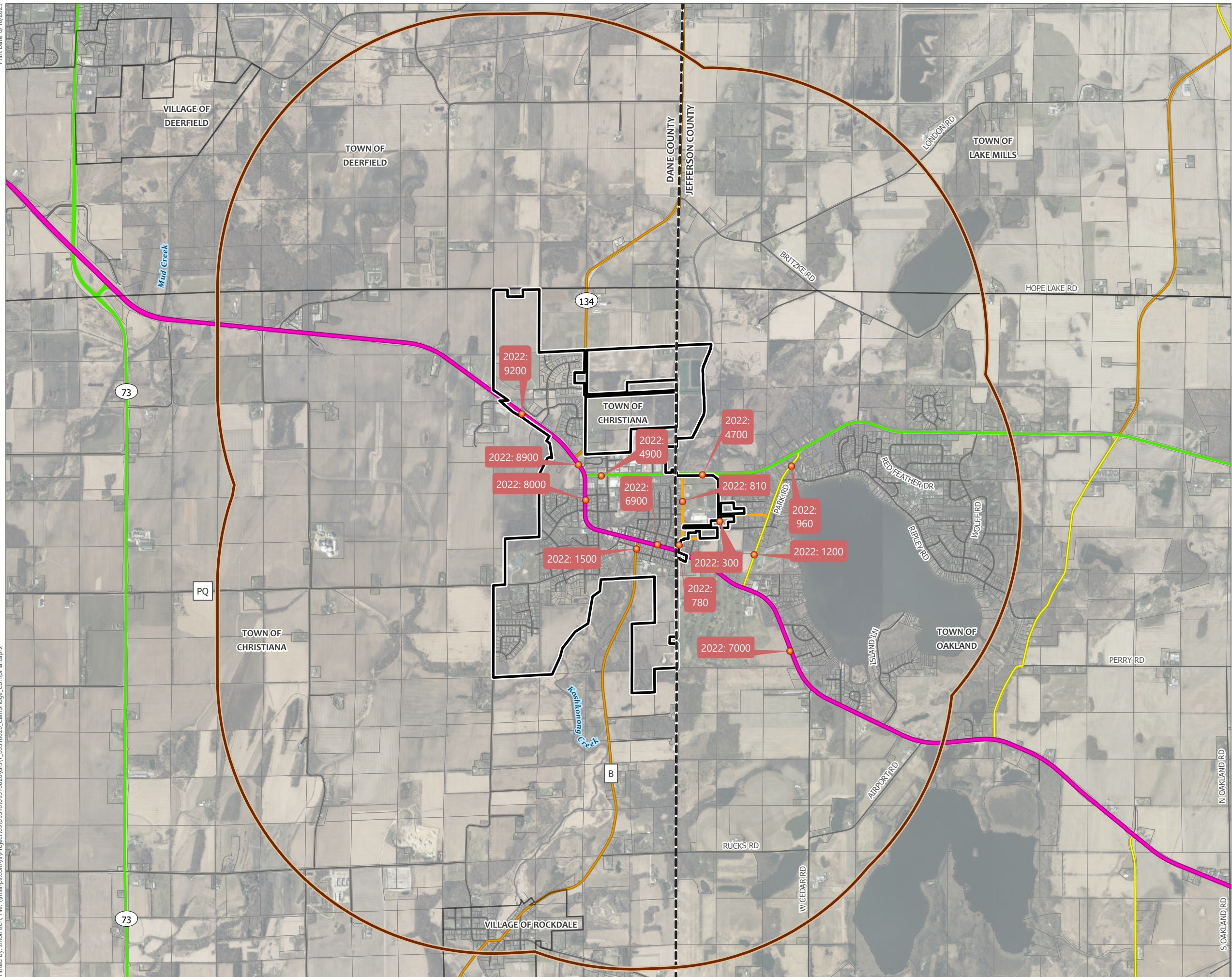


Data Sources:
Dane County GIS (2023) & Jefferson County GIS (2023)
Dane County LiDAR (2017) & Jefferson Co LiDAR (2019)
FEMA (2023) WDNR (2023)
DNR Aerial Imagery (2018-2020)

Transportation Network

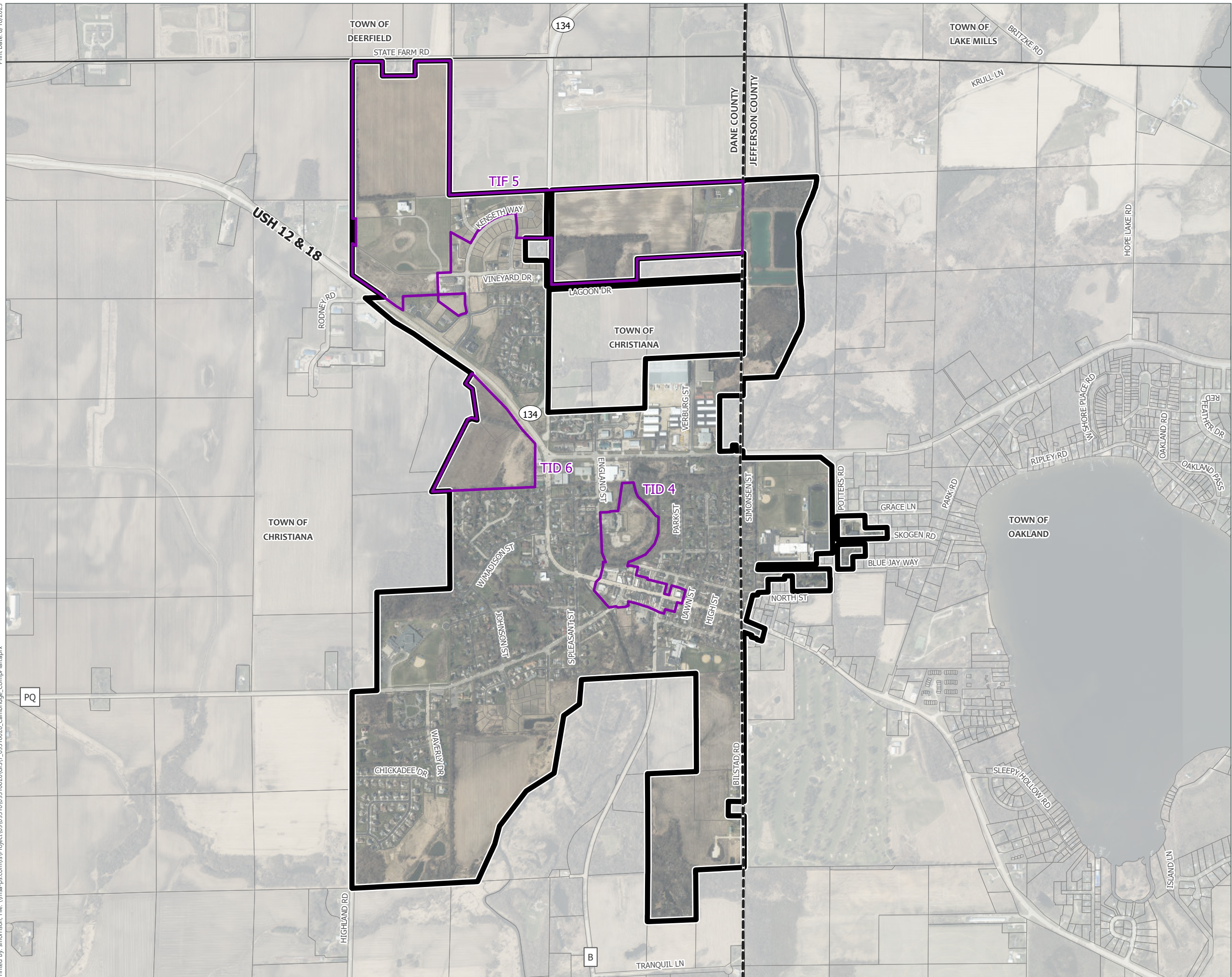
Comprehensive Plan Update

Village of Cambridge Dane & Jefferson Counties, WI



- Traffic Count Sites
- Planning Area (1.5 Mile Buffer)
- Village of Cambridge
- County Boundary
- WisDOT Functional Classification**
- Rural Principal Arterial (RPA)
- Rural Minor Arterial (RMA)
- Rural Major Collector (RMAC)
- Rural Minor Collector (RMIC)
- Chart C Minor Collector (CCMC)
- Local Road






Data Sources:
 Dane County GIS (2023)
 Jefferson County GIS (2023)
 WisDOT (2023)
 DNR Aerial Imagery (2018-2020)



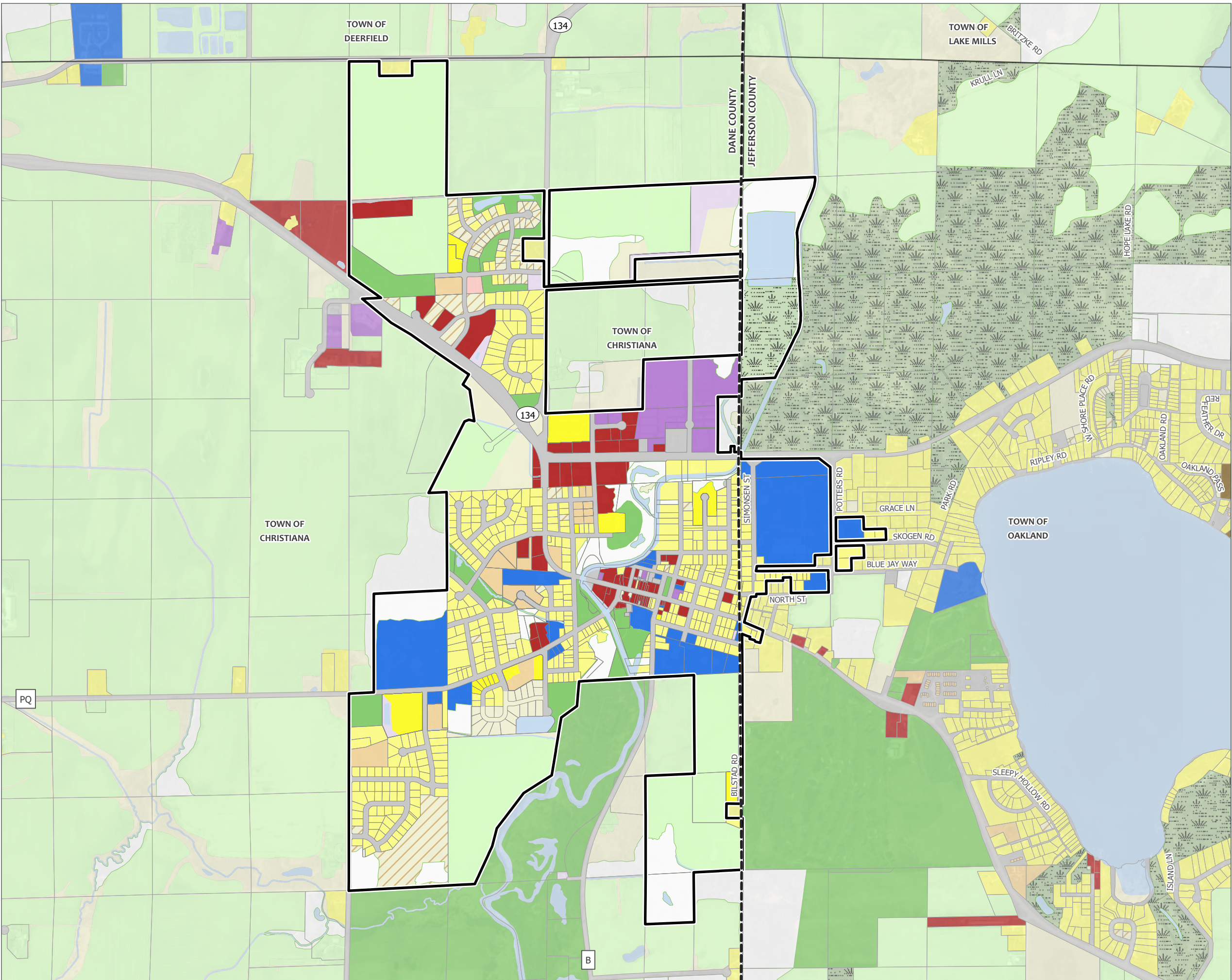
TID Areas

Comprehensive Plan Update

Village of Cambridge
Dane & Jefferson Counties, WI

-  Planning Area (1.5 Mile Buffer)
-  TID/TIF Areas
-  Village of Cambridge
-  Surrounding Municipality
-  County Boundary

Data Sources:
Dane County GIS (2023) & Jefferson County GIS (2023)
DNR Aerial Imagery (2018-2020)



Existing Land Use

Comprehensive Plan Update

Village of Cambridge
Dane & Jefferson Counties, WI

- Village of Cambridge
- Surrounding Municipality
- County Boundary

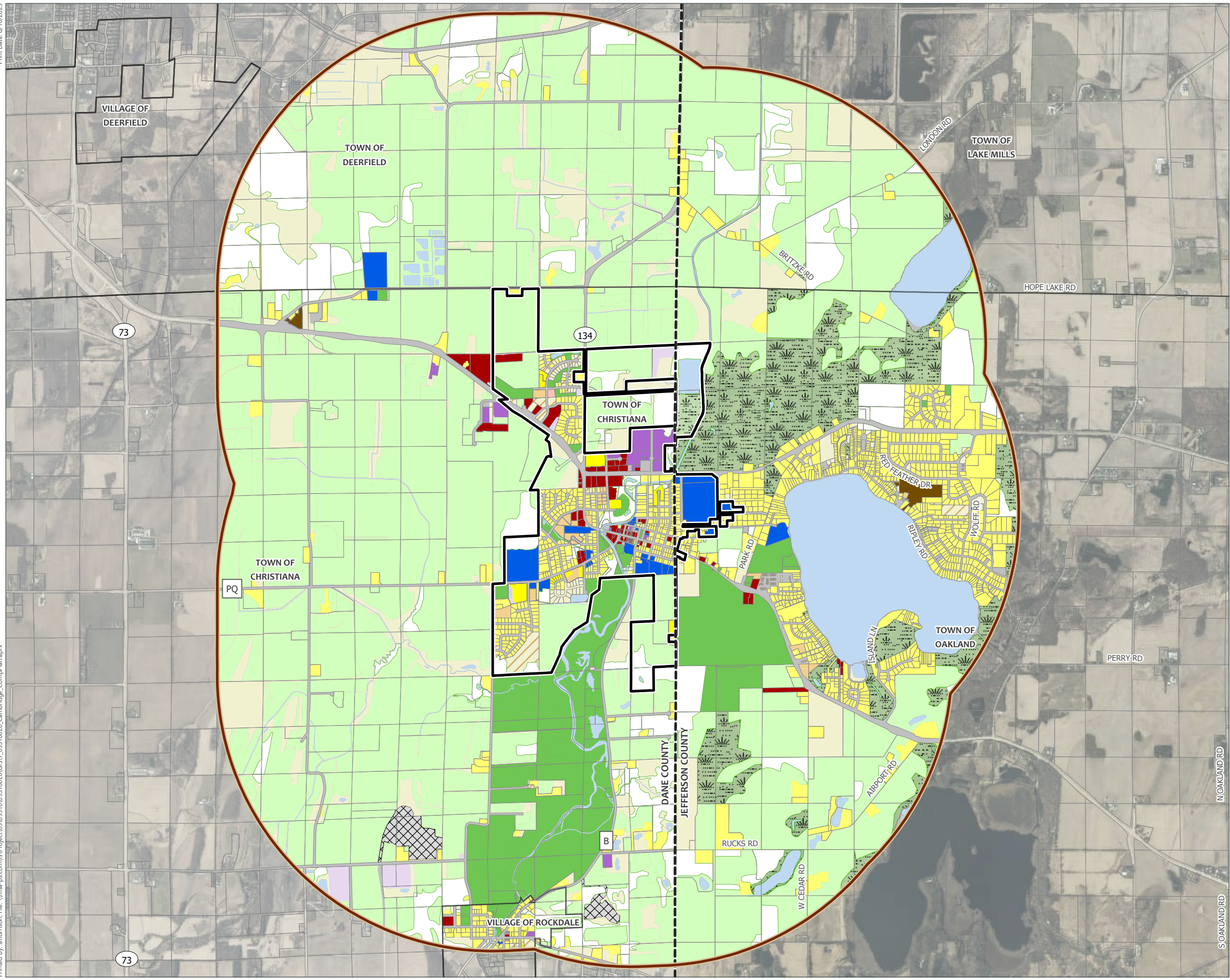
- Existing Land Use
- Agriculture
 - Commercial
 - Industrial
 - Institutional
 - Single-Family Residential
 - Duplex Residential
 - Multi-Family Residential
 - Mobile Homes
 - Under Construction
 - Vacant Residential
 - Open Land
 - Parks and Recreation
 - Roads; Transportation
 - Utilities
 - Water
 - Wetlands
 - Wooded

Data Sources:
 Dane County GIS (2023) & Jefferson County GIS (2023)
 Land Use Developed from County and MSA & Aerial Review
 DNR Aerial Imagery (2018-2020)

Existing Land Use

Comprehensive Plan Update

Village of Cambridge
Dane & Jefferson Counties, WI



- Planning Area (1.5 Mile Buffer)
- Village of Cambridge
- Surrounding Municipality
- County Boundary
- Existing Land Use
 - Agriculture
 - Commercial
 - Industrial
 - Mining/Quarry
 - Institutional
 - Single-Family Residential
 - Duplex Residential
 - Multi-Family Residential
 - Mobile Homes
 - Under Construction
 - Vacant Residential
 - Open Land
 - Parks and Recreation
 - Roads; Transportation
 - Utilities
 - Water
 - Wetlands
 - Wooded

Data Sources:
Dane County GIS (2023) & Jefferson County GIS (2023)
DNR Aerial Imagery (2018-2020)



Future Land Use

Comprehensive Plan Update

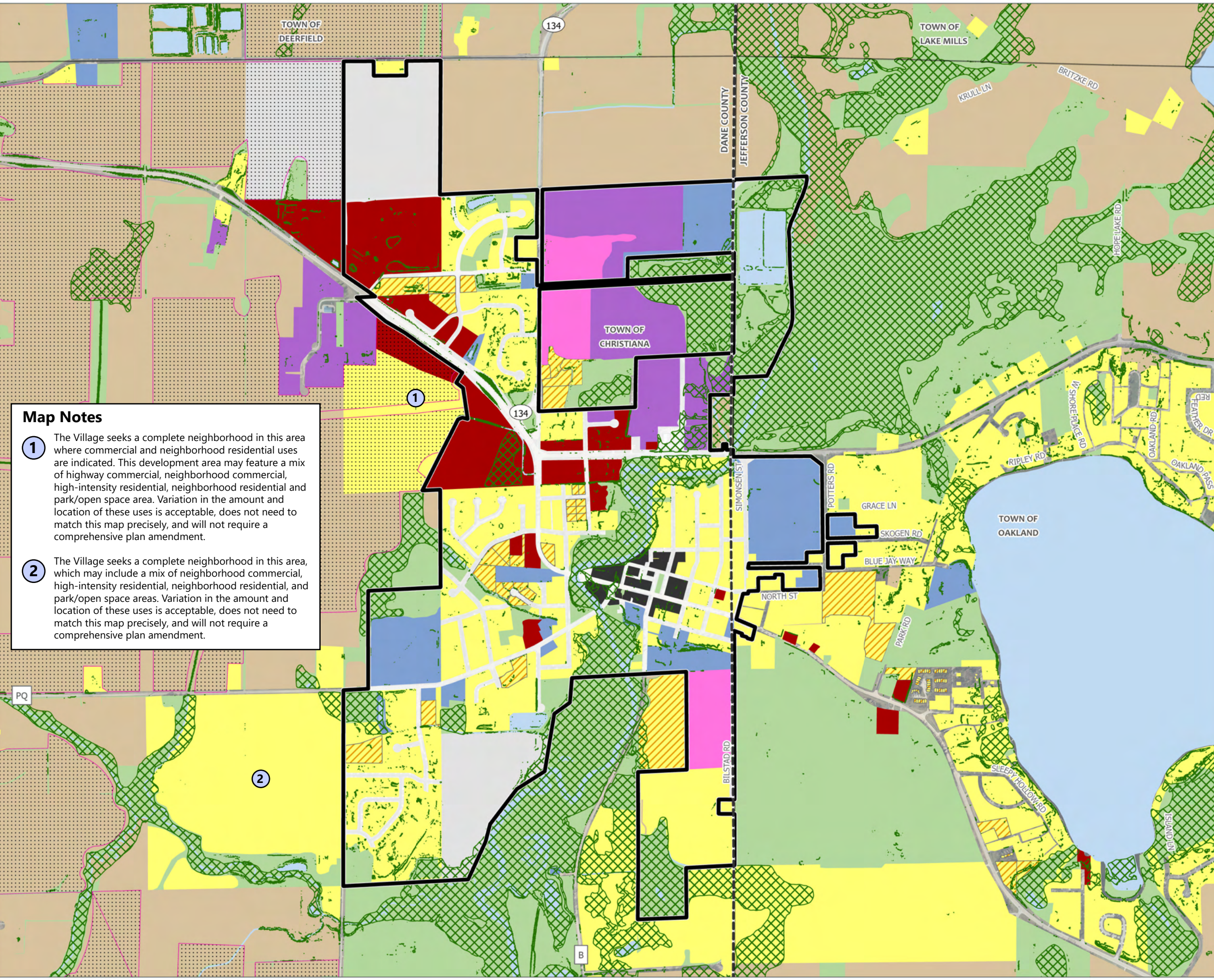
Village of Cambridge
Dane & Jefferson Counties, WI

Print Date: 10/16/2023
Printed By: bwiedenfeld File: \\msa-ps.com\GIS\Project\09310020\GIS\7_09310020_Cambridge_CompPlan.aprx

Map Notes

1 The Village seeks a complete neighborhood in this area where commercial and neighborhood residential uses are indicated. This development area may feature a mix of highway commercial, neighborhood commercial, high-intensity residential, neighborhood residential and park/open space area. Variation in the amount and location of these uses is acceptable, does not need to match this map precisely, and will not require a comprehensive plan amendment.

2 The Village seeks a complete neighborhood in this area, which may include a mix of neighborhood commercial, high-intensity residential, neighborhood residential, and park/open space areas. Variation in the amount and location of these uses is acceptable, does not need to match this map precisely, and will not require a comprehensive plan amendment.



- Planning Area (1.5 Mile Buffer)
 - Village of Cambridge
 - Surrounding Municipality
 - County Boundary
 - Potential Solar Array Area (Koshkonong Solar)
 - Parks/Open Space - NP Overlay
 - Water
- Future Land Use**
- Neighborhood Residential (NR)
 - High-Intensity Residential Overlay (HIR)
 - Neighborhood Mixed Use (NMU)
 - Urban Reserve (UR)
 - Downtown Mixed-Use (DMU)
 - General Commercial (GC)
 - Civic/Institutional (CI)
 - Business Park (BP)
 - Parks & Open Space (POS)
 - Rural Land (RL)

Data Sources:
Dane County GIS (2023) & Jefferson County GIS (2023)
NRO = Wetlands, Slopes > 20%, and FEMA Flood Plain Hazard Areas
Solar Array Areas: PSC/Koshkonong Study
DNR Aerial Imagery (2018-2020)

Future Land Use

Comprehensive Plan Update

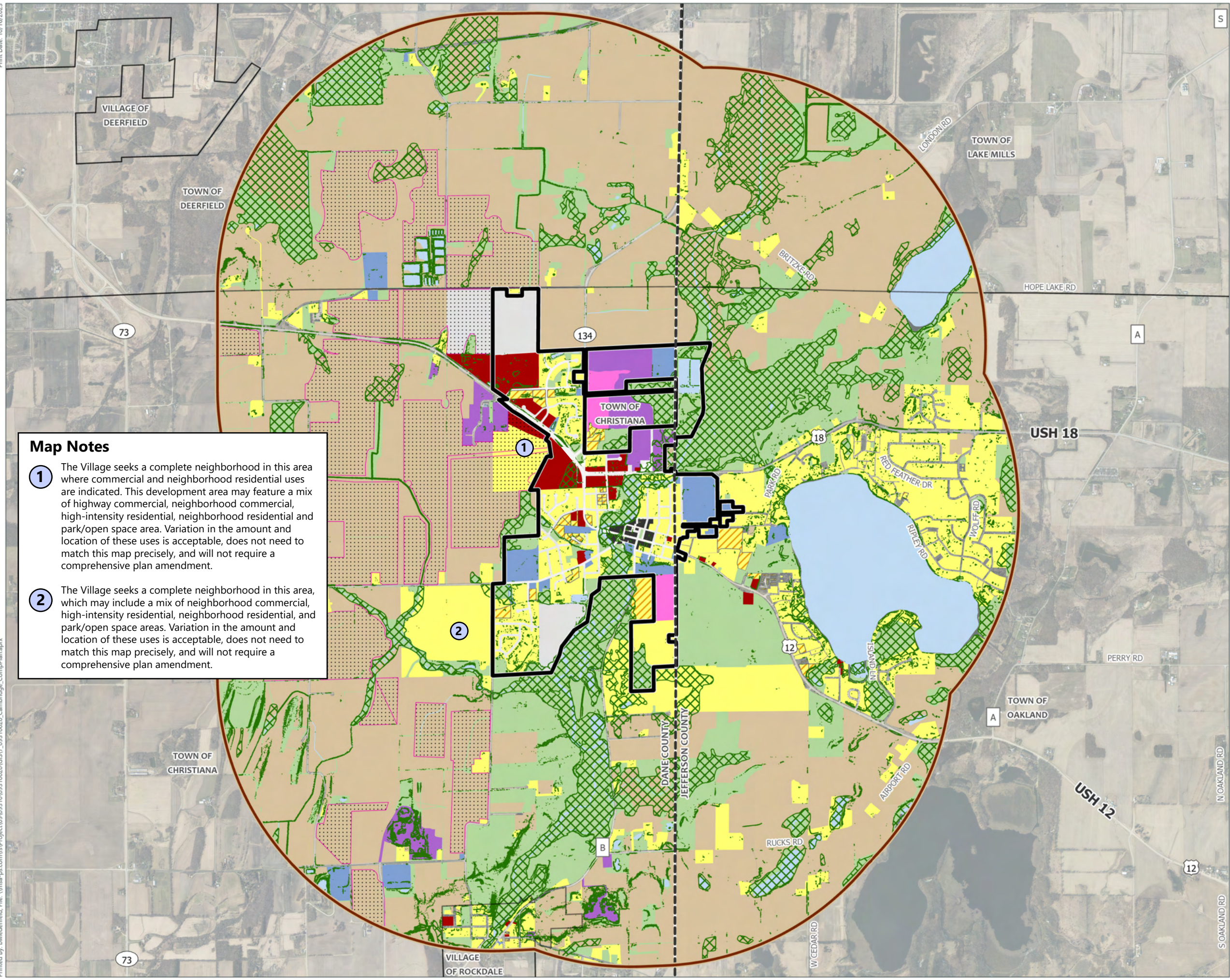
Village of Cambridge
Dane & Jefferson Counties, WI

Print Date: 10/16/2023
Printed By: bwiedenfeld, File: \\msa-ps.com\61\Project\09\09310\09310020\GIS\7_09310020_Cambridge_CompPlan.aprx

Map Notes

1 The Village seeks a complete neighborhood in this area where commercial and neighborhood residential uses are indicated. This development area may feature a mix of highway commercial, neighborhood commercial, high-intensity residential, neighborhood residential and park/open space area. Variation in the amount and location of these uses is acceptable, does not need to match this map precisely, and will not require a comprehensive plan amendment.

2 The Village seeks a complete neighborhood in this area, which may include a mix of neighborhood commercial, high-intensity residential, neighborhood residential, and park/open space areas. Variation in the amount and location of these uses is acceptable, does not need to match this map precisely, and will not require a comprehensive plan amendment.



- Planning Area (1.5 Mile Buffer)
 - Village of Cambridge
 - Surrounding Municipality
 - County Boundary
 - Potential Solar Array Area (Koshkonong Solar)
 - Parks/Open Space - NP Overlay
 - Water
- Future Land Use
- Neighborhood Residential (NR)
 - High-Intensity Residential Overlay (HIR)
 - Neighborhood Mixed Use (NMU)
 - Urban Reserve (UR)
 - Downtown Mixed-Use (DMU)
 - General Commercial (GC)
 - Civic/Institutional (CI)
 - Business Park (BP)
 - Parks & Open Space (POS)
 - Rural Land (RL)

Data Sources:
Dane County GIS (2023) & Jefferson County GIS (2023)
NRO = Wetlands, Slopes > 20%, and FEMA Flood Plain Hazard Areas
Solar Array Areas: PSC/Koshkonong Study
DNR Aerial Imagery (2018-2020)

